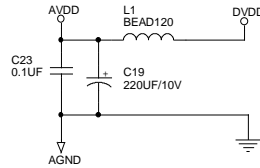
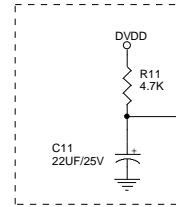


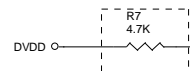
Note: DVDD is 3.3V.



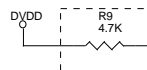
Note5: R11,C11 is for power on reset. It can also be reset by Host Processor.



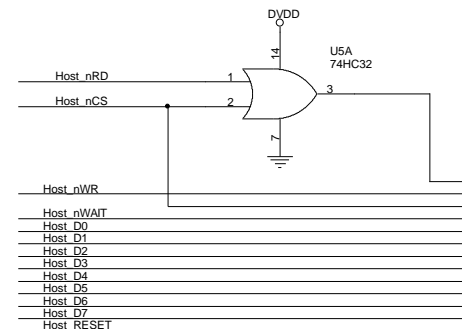
Note1: 16/32 bit selection; Removed R7 when using 16-bit mode; otherwise is 32-bit mode.



Note2: R9 pull high, LED mode is mode 1; otherwise it is mode 0.



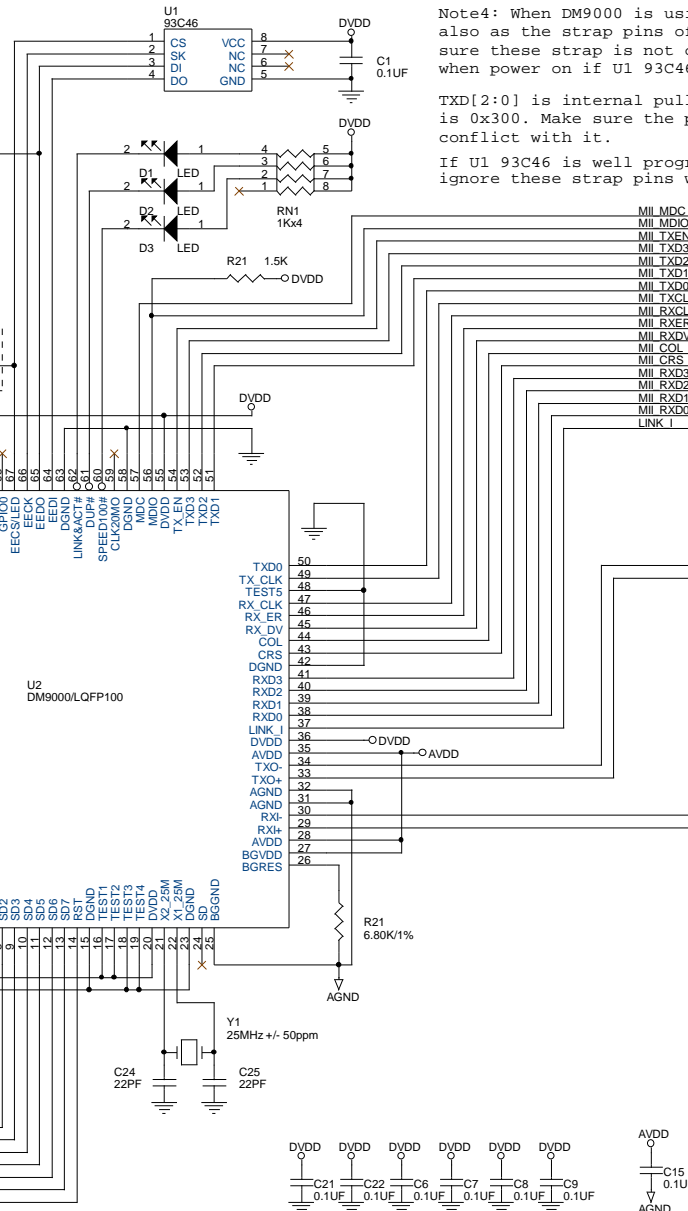
Note3: SA4-SA9 default IO base address is 0x300; it should be matched with TXD[2:0] if U1 93C46 is not available.



IO base address = Host_nCS

IO data address = Host_nCS + 0x04 (if Host_SA2 connect to CMD (92pin))

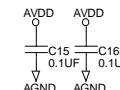
Note: DM9000 Host Parallel Bus, for MII adapter
For Application Reference Design Only



Note4: When DM9000 is using MII, TXD[2:0] is also as the strap pins of IO base address. Make sure these strap is not conflict with SA4-SA9 when power on if U1 93C46 is not available.

TXD[2:0] is internal pull low, means IO base is 0x300. Make sure the partner (MAC) is not conflict with it.

If U1 93C46 is well programmed IO base address, ignore these strap pins when power on.



DAVICOM Semiconductor, Inc.			
Title			
DM9000 10/100M Ethernet For Embedded System			
Size			
Custom			
Document Number			
DM9000 Host Parallel Bus, for MII adapter			
Date:			
Monday, July 21, 2003			
Sheet			
1 of 1			
Rev			
1.0			